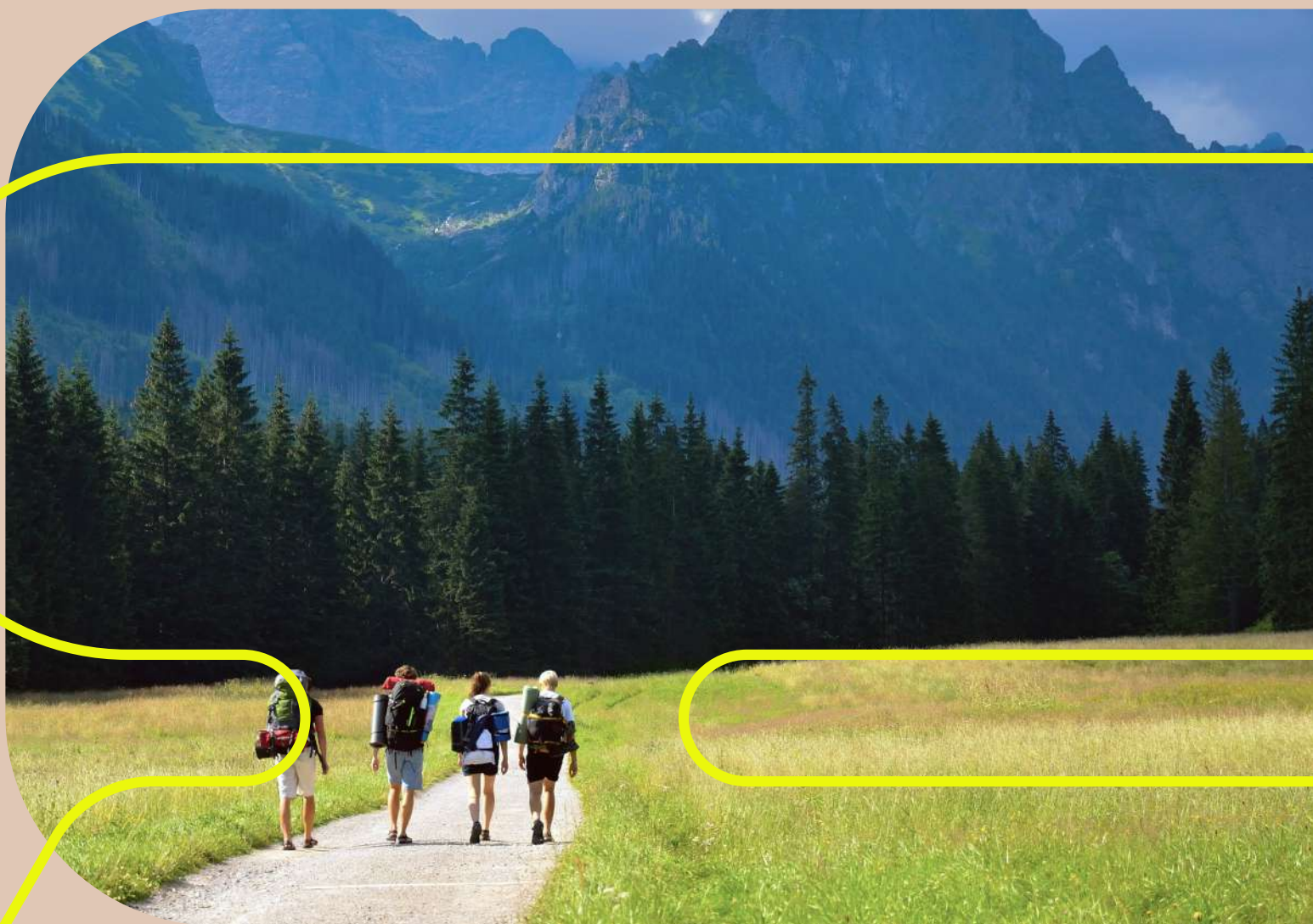
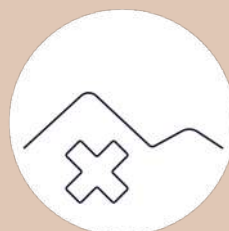


# Professional Development Support for Land Condition Professionals

July 2025



[the-ies.org](https://the-ies.org)



**The Institution  
of Environmental  
Sciences**

# Introduction to the Institution of Environmental Sciences

The [Institution of Environmental Sciences \(IES\)](#) is at the forefront of uniting the interdisciplinary field of environmental science around a shared mission: to work with speed, vision and expertise to solve the world's most pressing environmental challenges.

We are a UK registered charity and professional membership organisation, with members representing the full spectrum of environmental disciplines – from fields as diverse as air quality, land condition, water, and education – wherever you find environmental work underpinned by science. The IES is an influential voice for environmental professionals, which works to promote evidence-informed decision-making. Our skilled and knowledgeable membership act as a cohesive body of thinkers, problem solvers, educators, and practitioners.

## Why be a member of a professional body?

Professional body membership is an important part of your personal and professional development. It provides you with opportunities to access sector-specific resources, build your network, achieve

qualifications and recognition, and take a leading role in your sector. It signals your professionalism and expertise to clients and colleagues and provides opportunities for helping shape sector policy and practice.

[IES membership](#) includes the following benefits:

- 4 [journals](#) per annum
- Online, regional and national [events](#)
- Chance to apply for Chartered Scientist, Chartered Environmentalist, Registered Environmental Practitioner and Registered Environmental Technician
- Recognition of professional status
- Use of post-nominal letters
- Professional development support and CPD recording tool
- Use of our mentoring platform and [careers resources](#)
- Regular [reports and briefings](#) on the environmental science sector
- Monthly Essential Environment bulletin, containing deep dive articles and a round-up of the latest environmental policy and regulatory updates
- Opportunity to feed into IES consultation responses and other policy activities
- Policy training, case studies, and

resources to develop skills in policy engagement and understanding

- Ability to join one of our **communities** and/or early careers networks

## Join a Community, help shape your sector and build your professional network

A key element of the IES's work is through its member-led **Communities**. Communities are groups of members brought together around a shared professional interest, goal, or challenge. They are an integral part of the IES ecosystem, providing thought leadership for their area of focus, and a forum for members to network, collaborate and shape their sector.

At the IES we know that our members are the experts. Communities are a key tool for directly engaging with our members, channelling their expertise into a unified voice, and informing the development of tailored resources. Being member-led, they provide members with the agency to set their own priorities and develop associated work plans aligned with their needs and interests.

## The Land Condition Community

The IES has a dedicated **Land Condition Community** which brings together land condition professionals spanning sectors and job types, dedicated to promoting best practice in the specialism. The Community steers the IES activities related to land condition and supports the development of tailored membership services, exploring collaborations with key stakeholders in the

sector where relevant. The IES takes a collaborative approach to its work and engages with other organisations in the sector including Specialist in Land Condition (SiLC), National Brownfield Forum (NBF), and British Standards Institute (BSI).

The Community has a dedicated Early Careers Network, providing valuable opportunities for professional development and peer-to-peer learning for those at the early stages of their career.

Land condition is the state of a piece of land: a function of soil quality, contamination status, ground and surface water quality and the interactions between these factors, both within and across its boundaries with adjacent environments. Land condition reflects the inherent natural capital of a piece of land, along with its potential for improved natural capital through action such as remediation, restoration and enhancement.

## National Contaminated Land Officers Group (NCLOG)

NCLOG is also part of the IES Family, acting as the contaminated land experts within the [Environmental Policy Implementation Community \(EPIC\)](#). NCLOG membership is free for all Contaminated Land Officers working in local authorities.

NCLOG's mission is "to act as the voice for Contaminated Land Officers across the UK and promote consistency across the sector."

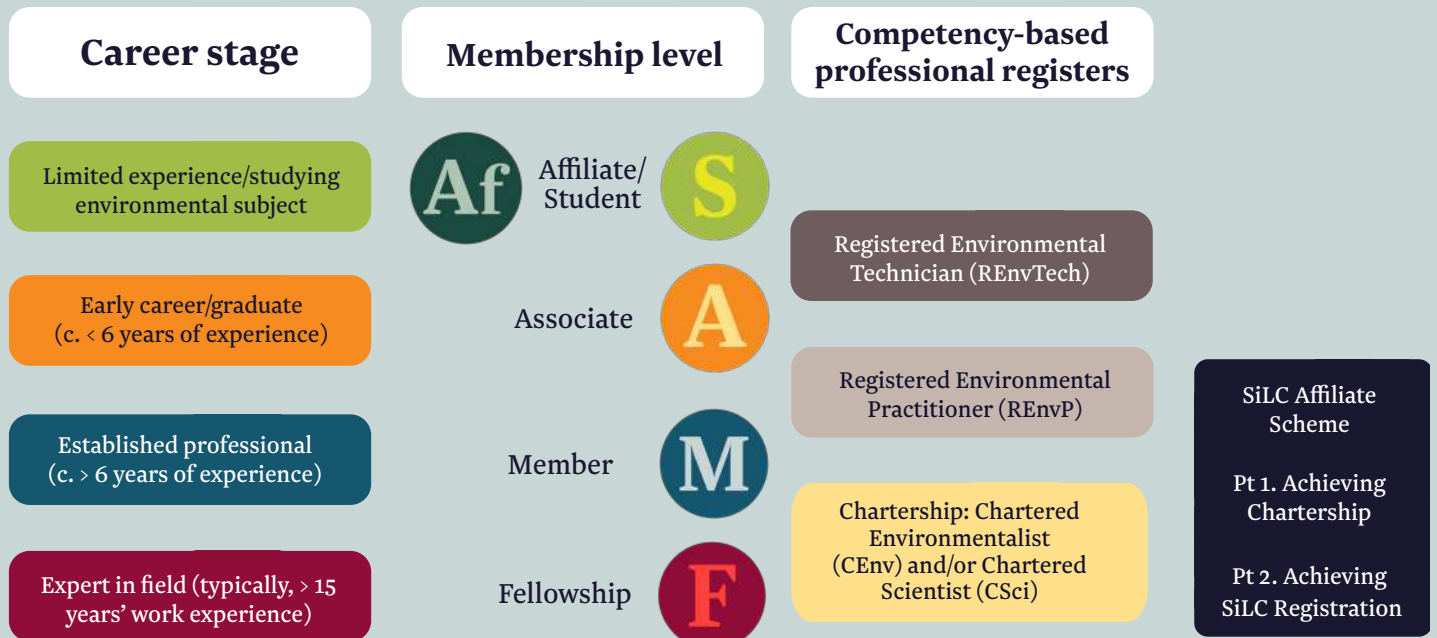
NCLOG membership involves:

- Discussion spaces with other Contaminated Land Officers
- Webinars & guidance on contaminated land issues
- NCLOG newsletter, providing updates on NCLOG activities & wider sector news
- The opportunity to shape NCLOG's work through joining working groups, feeding into new guidance, reports and consultation responses and suggesting new projects.



**Part of the IES family**

# Career Map



# Professional registration at the IES

## What is professional registration?

Professional registration is a type of qualification awarded by licensed professional bodies, which signals a professional's knowledge, experience and competence. A professional must hold a professional membership with a licensed body in order to apply for a registration.

The standards for different registrations are set by the licensing bodies and are competency-based. Relevant licensing bodies for the IES are the [Society for the Environment \(SocEnv\)](#) and the [Science Council](#).

## Why get a professional registration?

Professional registrations are valuable for professionals, employers, the wider profession and the public. They support best practice in the sector, by providing a globally recognised high standard of competence, ensuring the continuous professional development of environmental professionals and helping build trust with the public. Professionals with a registration must sign up to the licensing bodies' Code of Conduct.

Benefits for you:

- External verification as a dedicated, highly skilled and experienced professional
- Improved employability, supporting career progression and earning potential
- Signals commitment to professional development
- Legal credibility, enabling expert witness participation at a defined standard

Benefits to employers:

- Confirmation of the professional ability and competence of their employees and candidates
- Ensuring their staff are completing and undertaking relevant CPD.

Benefits to the sector and wider society:

- Supports best practice in the sector
- Provides a globally recognised standard of competence



# Registered Environmental Technician (REnvTech)

The Registered Environmental Technician denotes professional attainment and expertise for technicians working within the environmental sector. Technicians come from a diverse range of professions underpinned by the application of technical knowledge and skills, spanning the breadth of academia, government, industry, consultancy, and other public and private sectors.

This qualification is licensed by the [Society for the Environment](#).

## Who can apply?

To be eligible for the REnvTech designation, you will need to have a minimum of:

- Two years' full-time relevant work-based experience; and
- Equivalent of a Level 3 in the Qualifications and Credit Framework of England, Wales and Northern Ireland (or equivalent knowledge through professional practice).
- Candidates must also be an Affiliate, Associate or Full Member of the IES to apply.

## How to apply?

Candidates demonstrate their competence through completing a competency report, covering 4 key competencies (11 subsets). The report must include details of relevant projects or activities demonstrating competence relating to professional work for which you have been personally responsible. Examples should be taken from more than one project/activity.

The four key competencies are:

- Application of knowledge and understanding of the environment to further the aims of sustainability
- Actively support sustainable management of the environment
- Effective communication and interpersonal skills
- Personal commitment to professional standards, recognising obligations to society, the profession and the environment.

## How much does it cost?

- £76 application fee
- £28 annual fee

[Find out more](#)

# Registered Environmental Practitioner (REnvP)

The Registered Environmental Practitioner (REnvP) designation is a title which recognises the level of professional practice of people operating within the environmental sciences. It signifies a standard of environmental expertise, practice, and skills held by professionals spanning the breadth of academia, government, industry, consultancy, contractors, and other public and private sectors.

This qualification is licensed by the [Society for the Environment](#).

## Who can apply?

To be eligible for the REnvP designation, you will need to have a minimum of:

- At least one year's full-time relevant work-based experience;
- Associate Membership of the IES; and
- Equivalent of a Level 5 in the Qualifications and Credit Framework of England, Wales and Northern Ireland (or equivalent knowledge through professional practice).

## How to apply?

Candidates can demonstrate their competence either through completing a competency report or undertaking a

Professional Review Interview, depending on the preference of the applicant. Both routes will explore how well the candidate meets the four key competencies (11 subsets).

The four key competencies are:

- Application of knowledge and understanding of the environment to further the aims of sustainability
- Leading sustainable management of the environment
- Effective communication and interpersonal skills
- Personal commitment to professional standards, recognising obligations to society, the profession and the environment.

## How much does it cost?

Application fee £94

Annual fee £38

[Find out more](#)



# Chartership

Chartership status denotes a high level of competence within a particular profession, signifying that an individual has been judged by their peers to be working at a high standard within their profession. It is a globally recognised mark of achievement that enhances career prospects through establishing proven expertise and experience.

There are a number of different Charterships that can be achieved, and professionals can hold multiple Charterships.

The IES offers two Chartership qualifications, the Chartered Environmentalist and the Chartered Scientist.

## Which Chartership is right for me?

Both CEnv and CSci are relevant to those who work in the land condition sector and the decision around which one a candidate applies for, or whether they get both, will depend on their professional goals and interests.

The table below provides an opportunity to compare between the two Charterships:

Factors	CEnv	CSci
<b>Emphasis</b>	Sustainability	Science
<b>Skills and knowledge covered</b>	Sustainability, problem analysis, methodology application, horizon scanning, influencing, leadership and management, communication, stakeholder management, ethics and CPD	Methodology application, communication, project, influencing, CPD and ethics
<b>Number registered</b>	7,500	8,700
<b>CPD</b>	Annual submission	Annual submission
<b>Application cost</b>	£336 / £499	£139 / £399
<b>Annual cost</b>	£63	£77
<b>Mandatory interview</b>	Yes	No
<b>Workshop</b>	CEnv in a Day	CSci Accelerated
<b>Code of ethics</b>	Yes	Yes
<b>Competencies</b>	12	15
<b>Registration authority</b>	SocEnv	Science Council
<b>Established</b>	2004	2004
<b>Required grade</b>	Member or Fellow	Member or Fellow

# Chartered Environmentalist (CEnv)

CEnvs come from no single profession but operate across all professional sectors. There are over 7,500 registered Chartered environmental professionals. The CEnv qualification denotes sound knowledge, proven experience and a profound commitment to sustainable best practice within their particular profession and field of expertise. The licensing body for CEnv is the Society for the Environment.

## Who can apply?

To be eligible for the CEnv designation, you will need to have a minimum of:

- At least four year's full-time relevant work-based experience; and
- Full IES Membership or be Fellow of the IES
- a relevant masters-level degree or ability to demonstrate equivalent level of knowledge through experience.

## How to apply?

There are two routes that a candidate can take to achieve CEnv.

### CEnv in a Day workshop

Our highly regarded [CEnv in a Day workshop](#) support candidates in achieving their CEnv through a dedicated online workshop, with no more than five people in each.

This supports candidates in completing the process quicker, provides tailored guidance on their application from experienced trainers, and helps build confidence for the professional interview. Most members applying for CEnv choose the workshop stream, which sees candidates completing the bulk of their Chartership in one comprehensive day, with the interview taking place shortly after.

### Self-guided route

You can complete the CEnv application at your own pace by completing the self-guided application route.

Both routes involve preparing a competency report, followed by a professional interview. If the report or interview do not meet the standards, it will be returned to you with guidance about what additional information needs to be submitted, or what needs to be covered at a future interview.

For workshop applicants, unsatisfactory reports and/or interviews will require resubmission at a subsequent date.

If a candidate does not pass the assessment the first time, they can resubmit their report without additional charge. There is no time limit for resubmission, however candidates are encouraged to resubmit as soon as possible.

You are required to identify two supporters who can confirm that the projects listed in your CV and detailed in the report represent your own work. The supporters must be familiar with your work and will be a senior colleague, usually a line manager or supervisor. Wherever possible, supporters should hold membership of a professional body and professional registration where it exists but they do not need to be a member of the IES.

More details can be found [on our website](#). Two workshops are usually held per month, but they often sell out very quickly and are heavily oversubscribed. If you [contact the IES Admin Team](#), you can be added to a mailing list so that you are the first to hear when new workshop dates become available.

## Competencies for CEnv

Applicants for CEnv will need to demonstrate competence across four key competency areas:

- Application of knowledge and understanding of the environment to further the aims of sustainability
- Leading Sustainable Management of the Environment
- Effective communication and interpersonal skills
- Personal commitment to professional standards, recognising obligations to society, the profession and the environment.

Find out more about the different competencies in the [CEnv Information Pack](#).

The IES Land Condition Community have developed a dedicated resource for land condition professionals looking to achieve CEnv that provides tailored guidance on the competencies for CEnv. You will be sent this on request.

## How much does it cost?

Self-guided route: £336

Workshop route: £499

Annual fee: £63

[Find out more](#)

# Chartered Scientist (CSci)

The CSci designation demonstrates a high level of competence and professionalism in science. At present there are over around 9,000 Chartered Scientists working across all sectors of science. Candidates need to demonstrate their competence in five main areas; application of scientific knowledge and understanding, personal responsibility, interpersonal skills, professional practice, and professionalism.

The designation aims to give an assurance of current competence through mandatory revalidation of CPD, and encapsulates the interdisciplinary nature of science in the 21st Century.

The licensing body for CSci is the [Science Council](#).

## Who can apply?

To be eligible for the CSci designation, you will need to have a minimum of:

- At least four year's full-time relevant work-based experience; and
- Full IES Membership or be a Fellow of the IES
- a relevant masters-level degree or ability to demonstrate equivalent level of knowledge through experience.

## How to apply?

There are three routes that a candidate can take to achieve CSci.

### CSci Accelerated workshop

Our highly regarded [CSci Accelerated workshop](#) supports candidates in achieving their CSci through a dedicated online workshop, with no more than five people in each. This supports candidates in completing the process quicker, provides tailored guidance on their application from experienced trainers and helps build confidence for the professional interview. Most members applying for CSci chose the workshop route, which condenses the assessment process and provides additional support which generally leads to higher success rates.

### Self-guided route

You can complete the CSci application at your own pace by completing the self-guided application route.

### CEnv-CSci dual registration pilot scheme

The Science Council are exploring the possibility of mapping Chartered Environmentalist (CEnv) to Chartered Scientist (CSci), allowing those holding CEnv registration to apply for CSci registration through a shortened route.

The IES are engaged in this project as a **pilot partner**, allowing existing CEnvS to apply for CSci using a modified application process.

We are asking applicants to demonstrate competencies A1, A2, A3 and B2 of the CSci application alongside an already awarded CEnv registration.

Both routes involve preparing a competency report, followed by professional interview if required. The interview is not required for all candidates, but approximately half of candidates are interviewed.

You are required to identify one supporter who can confirm that the projects listed in your CV and detailed in the report represent your own work. The supporter must be familiar with your work and will be a senior colleague, usually a line manager or supervisor. Wherever possible, supporters should hold membership of a professional body and professional registration. They do not need to be an IES member.

You can find out more about the process [on our website](#).

## Competencies for CSci

Applicants for CSci will need to demonstrate competence across 5 key competency areas:

- Application of knowledge and understanding
- Personal responsibility
- Interpersonal skills
- Professional practice
- Professional standards

[Find out more in the CSci Information Pack.](#)

## How much does it cost?

Self-guided route: £139 (plus 90 extra if interview required)

Workshop route: £399

Annual fee: £77

# Case studies

## Registered Environmental Technician

### **Daniel Struggles, Senior Geo-environmental Engineer**

I chose to apply for the REnvTech qualification because I felt it was a good way to take the initial steps towards Chartership through the IES (which I have recently just applied for). The application helped lead me to evaluate my career to date and think critically over the jobs I have worked upon. Those questions which I answered for the REnvTech application ultimately helped me write my Chartership application a few years down the line. The route that I took was the completion of the online application form on the IES website.

Regarding the benefits, in addition to the ones discussed above, my former employer Sweco also provided a financial incentive for the successful REnvTech application.







**“The application helped lead me to evaluate my career to date and think critically over the jobs I have worked upon”**

## Registered Environmental Practitioner

### Heather Gore, Energy sector

One of my career goals is to become a Chartered Environmentalist, and I thought that REnvP would be a good stepping stone to help me reach Chartered status. I hoped that the application process would give me experience in applying for a professional registration.

I took the interview route, which I would highly recommend. The interview felt more like a chat about interesting environmental issues and projects than an interview. The two IES assessors made me feel very at ease and I received feedback promptly afterwards.

Having REnvP status helps me to demonstrate the skills and experience I have gained so far in my career as an environmental professional. I feel a sense of responsibility to uphold the values of the IES and SocEnv. The most important value for me is to conduct my work with integrity, which reminds me to always seek the best outcomes for the environment.





**“Having REnvP status helps me to demonstrate the skills and experience I have gained so far”**







**“The biggest benefit has been the personal confidence it has given me”**

## **Annie Harding, Senior Geo-environmental Consultant**

I chose to get the REnvP qualification as a way to showcase my environmental knowledge and commitment to environmental practise to my peers, wider network and clients.

It was also a stepping stone to help prepare for Chartership in the future and showed my ambition to becoming Chartered once I had the necessary experiences. It helped me to start thinking about my career through the lens of sustainability which as a land condition professional isn't always as obvious as other environmental professions.

I chose to complete the report route. I found this route allowed me to prepare around my other work commitments and gain feedback from my peers prior to submitting, although there is a challenging word count to keep to. I did also have an interview to clarify some of my answers and I found this to be helpful as it's much easier to expand on answers and discuss experiences in more detail. It was also a great experience to discuss aspects of my career with people other than my usual work colleagues. My advice to anyone applying would be don't be afraid of the interview option!

The biggest benefit for me has been the personal confidence it has given me from reflecting on my knowledge and skillsets. The skills and competencies needed for the REnvP qualification are similar to those required for the Chartership application. The feedback I received from my REnvP application is currently helping me as I prepare for the Chartership application in the near future.



It has also helped with my career progression to becoming a senior consultant and helped to demonstrate my commitment to my continued development as a consultant and becoming Chartered in the future.

## Chartered Environmentalist

### **Sarah Harris, Lead Specialist Advisor – Hydrogeology**

I wasn't always sure which Chartership route would be the best fit for me, but I knew I wanted the opportunity to put my experiences and learned knowledge into a qualification which showed my expertise and competency in my field, for both myself and others. For me personally, the CEnv qualification through the IES was exactly what I was after – the commitment to embedding sustainable principles within our work is a key driver in the brownfield regeneration sector and something I as a practitioner have been practicing since I joined the industry. I love the diversity of specialisms and roles of professionals who have gained CEnv within the IES; you get access to some fantastic resources (workshops, webinars, sub-groups and journals to name a few) which cover not just my specialty but extend beyond that into other areas which compliment what I do, and I really enjoy having access to such varied information across the land condition sector.

I chose the 'CEnv in a Day' workshop route as for me, I prefer having a set deadline to work towards and could see the benefit in the advice provided during the workshop. The process itself wasn't as daunting as I'd thought it to be – the initial information pack was really helpful to get started, and knowing the mentoring scheme was in place to help where I needed it was comforting. My online workshop was the



first week of lockdown in 2020 and the online format was excellent; the support from the mentor undertaking the session was invaluable and I felt really prepared for the interview.

Professionally, there are plenty of benefits of becoming a CEnv – it demonstrates your competence to those I work with and provides confidence to them in the advice I provide and shows my overarching commitment to sustainable brownfield regeneration. Beyond the professional importance, for me personally I feel it continues to hold me accountable to continue to develop and learn in the land condition space with respect to how we can most effectively deliver environment improvement and solutions whilst aligning with sustainable best practice and maintaining a high degree of technical excellence.





**“I love the diversity of specialisms and roles of professionals who have gained CEnv within the IES”**

## Chartered Scientist

### **Darren Makin, Geoenvironmental Lead**

I have been in the industry since 1998 when I was drawn into contaminated land by accident first in a graduate role as a Technical Coordinator at a contaminated land testing laboratory, then following a career path into Consultancy as an Environmental Technician, Geoenvironmental Engineer and Contaminated Land Consultant with a few secondments along the way. For a contaminated land consultant there were limited routes to Chartership relevant to my area of expertise and I was drawn towards the IES and Chartered Scientist route. It had always been an ambition of mine, as well as a development requirement, to achieve Chartership. I see it as a professional status in the industry and recognition that you have attained a level of competency and standing.

The Chartership pathway with the IES supports and helps to build your career as you work to meet the standards and gain the experience required to show you have the necessary knowledge in your field and attained the expectations set. As well as following the Chartership route with the IES, being a member allows you access to various resources such as online events, mentoring and opportunity to join in the discipline specific working groups (such as the IES Land Condition Community) which provide opportunities to support your continuous professional development. Initially I planned to follow the standard application route but found out about the CSci Accelerated workshop which was



available. I found this route appealing as I believed it would spur me on to finalise my report and give me a final deadline to achieve it in. However, it was much more than I envisaged, the workshop and coaching provided beforehand was highly beneficial and helped shape my report to demonstrate the core competencies.

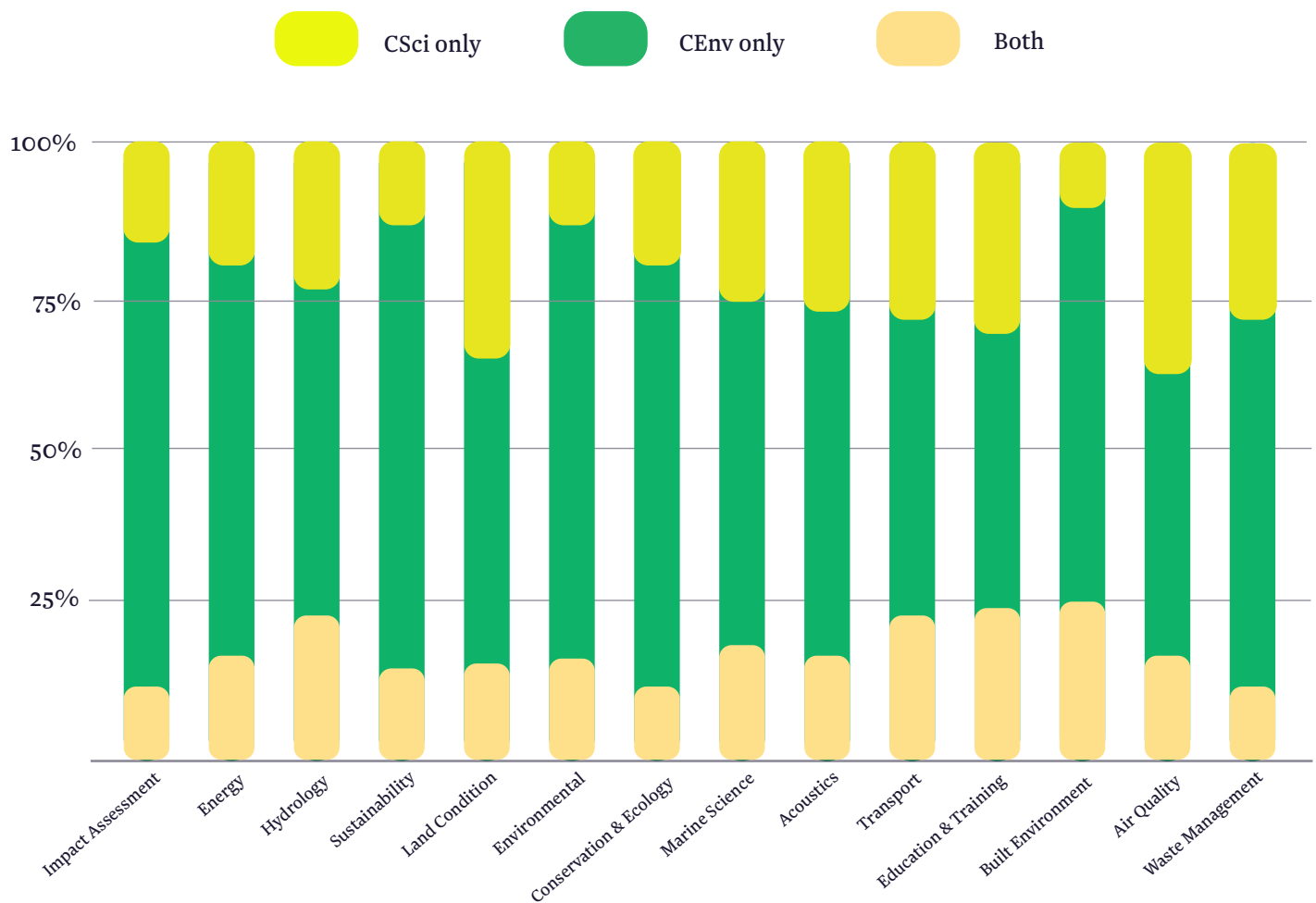
I am currently SOCOTEC UKs Ground Investigation (GI) division's Geoenvironmental Lead specialising in environmental management and the investigation assessment of contaminated land and Chartership is a requirement of the role to demonstrate a level of competence and is a client qualification requirement in a lot of tenders we receive. Clients and industry recognise the standard of Chartership; it instils confidence that the person they are dealing with is credible. For me it has been one of my career highlights.



**“Clients and industry recognise the standard of Chartership; it instils confidence that the person they are dealing with is credible”**



## Proportion of Charterships (either CEnv, CSci, or both) by field



# Next steps for Land Condition Professionals – SiLC and SQP

After achieving Chartership, land condition professionals can opt to become a registered **Specialist in Land Condition (SiLC)**. A registered SiLC is a senior practitioner who has a broad awareness, knowledge and understanding of land condition issues, providing impartial and professional advice in their field of expertise. SiLC represents the highest level of expertise a Chartered professional can achieve in land condition and brownfield regeneration.

Individuals need to undergo an application, open book written exam and interview process. To be eligible you must hold a Chartership, degree or equivalent and sufficient relevant experience in land condition.

All registered SiLCs may become **Suitably Qualified Persons (SQP)** under the **National Quality Mark Scheme (NQMS)** by passing a short Conversion Exam. The NQMS is a scheme that has been developed by the National Brownfield Forum to provide visible identification of documents that have been checked for quality by a Suitably Qualified and experienced Person (SQP). It provides increased confidence and improved quality of submissions made

under regulatory regimes, particularly planning applications, related to previously used land.

SiLC is the awarding body for SQP. The IES is a supporting organisation of SiLC.

## **Specialist in Land Condition (SiLC) Affiliate Scheme**

The **SiLC Affiliate Scheme** provides land condition professionals with structured professional development support throughout the process of becoming Chartered and, subsequently, a registered SiLC. This includes engagement with a SiLC-approved mentor and tailored CPD opportunities. The IES is a supporter of the SiLC Affiliate Scheme.

The annual membership cost of the SiLC Affiliate Scheme is £60 plus VAT. This fee includes a 20% discount off the attendance fee for the SiLC Annual Forum.

# Continuous Professional Development (CPD)

CPD is fundamental to an environmental professional's career. It offers individuals the opportunity to augment their abilities within the workplace by furthering knowledge of their discipline, demonstrating professional achievements, enhancing career prospects and increasing job satisfaction.

All professional members of the IES agree to undertake a minimum of 30 hours' CPD each year, and meeting this requirement is essential for attaining and sustaining Chartered Environmentalist, Chartered Scientist, Registered Environmental Practitioner, and Registered Environmental Technician designations. Each year, a proportion of our members' CPD is audited to ensure that our members are maintaining a continuous and reflective record of their ongoing learning.

Members can record their CPD activities using the dedicated CPD tool in the [Members Area](#) of the IES website. CPD should be appropriate for the level of expertise of the individual and should provide a good combination of the different CPD types: formal learning, work-based learning, professional activity, self-directed learning and others.

## Volunteering and CPD

Volunteering with the IES is a great way to build on your CPD. Actively engaging with our Land Condition Community and Early Careers Network through their Steering Groups or Working Groups is an excellent way to grow your network, develop new skills and build on your CPD.

Other volunteering opportunities include:

- Speaking at an IES event or webinar
- Contributing to an IES journal or blog post
- Once you've achieved Chartership, becoming a Chartership Assessor
- Registering as a mentor on our mentoring platform to support the next generation of environmental scientists

[Get in touch](#) with the IES if you are interested in any of these opportunities.

[Find out more about CPD on the IES website.](#)



# IES resources to support your professional development

Professional membership at the IES provides you with access to multiple professional development opportunities to support your career goals and progression. These include:

- The IES has a dedicated [mentoring platform](#) to support our members in reaching their career goals. There are dedicated mentoring streams for those looking to achieve Chartership, registrations or for progressing through the membership levels, or more general mentoring opportunities to learn from others in the sector.
- The IES Land Condition Early Careers Network (ECN) provides tailored events and opportunities for Land Condition Community members who are in the first 10 years of their career in the sector. The ECN is led by an approachable, friendly Steering Group who plan and deliver resources covering everything from technical guidance to career progression. They support ECN members to network with like-minded peers and advance their careers in a supportive environment, often sharing their own experiences as land condition professionals to ensure members benefit from a personal insight into a range of roles within the sector. For example, they hosted a panel discussion on the Chartership process which featured their individual accounts alongside practical information.
- Dedicated guidance to support land condition professionals in achieving the Chartered Environmentalist qualification. This was prepared by our Land Condition Community and provides tailored tips on your application from a land condition perspective. You can request this when you sign up to complete Chartership through the workshop or self-guided routes.
- A [Land Condition Signposting Resource \(LCSR\)](#) to provide an initial point of assistance for Land Condition practitioners, of all levels of experience, to locate key information sources across a broad range of topic areas relevant to the Land Condition sector. To complement existing resources in the sector, the LCSR focusses on providing information on key organisations and networks relevant to land condition. It should be used in tandem with other resources to identify specific guidance

and/or legislation. This resource recognises the wide-ranging nature of the specialism and aims to signpost to relevant interdisciplinary organisations/networks.

- To support our members in staying up to date with emerging topics in environmental science and support their CPD journeys we provide a busy events calendar and publications, including the following highlights:
  - o [Lunchtime webinars](#) on topical issues and case studies. You can catch up on past Land Condition related emails on [our YouTube channel](#).
  - o Conferences, including our annual Land Condition Symposium.
  - o Training, such as on ethics and policy.
  - o Dedicated Early Careers Network events, covering both technical and soft skills.
  - o Quarterly [journal](#), including issues focused on land condition topics.
  - o Community meetings and events

## Join the IES and accelerate your career now!

# Image Credits

**Front Cover - Hikers in the mountains, Slovakia**

© kovop58 | Adobe Stock

---

**p. 15 - Buzzard hunting**

© Chris Brignell | Adobe Stock

---

**p. 17 - Ancient forest Wistman's Wood**

© Savo Ilic | Adobe Stock

---

**p. 18 - Icelandic beach with black sand**

© Dziurek | Adobe Stock

---

**p. 21 - Irrigation system in a field of crops**

© Nexa | Adobe Stock

---

**p. 23 - Fjadrargljufur Canyon, Iceland**

© Leo Lintang | Adobe Stock

**The Institution  
of Environmental  
Sciences**

Institution of Environmental Sciences  
c/o The Association for Laboratory Medicine  
130-132 Tooley Street  
London SE1 2TU  
+44 (0)20 3862 7484  
[info@the-ies.org](mailto:info@the-ies.org)  
[www.the-ies.org](http://www.the-ies.org)  
Registered charity no. 277611